

Programa CAD Unigraphics CAM – 7

CAM

É possível realizar trajectórias actuando sobre superfícies, contornos, etc.

Este programa dispõe de uma aplicação de CAM, extensa, mas da qual só serão referidas as opções mais comuns na fabricação de MOLDES.

MANUFACTURING

A activação desta aplicação
pode ser obtida por:



Barra de botões



Menu Superior
“Application”
“Manufacturing”

Projecto Fim Curso 03-04 JOF

7 - 3

MANUFACTURING - MILL

Vamos estudar algumas das opções
para fresadora que pode envolver
operações tais como:

- Cavidade
- Macho
- Facejamento
- Furações
- ...
- Desbastes, Acabamentos, estratégias, etc.

Projecto Fim Curso 03-04 JOF

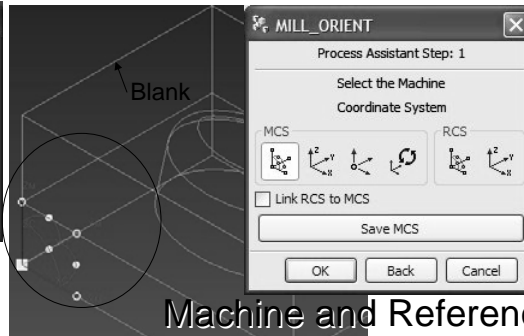
7 - 4

MANUFACTURING-MILL

No início é preciso caracterizar:



Classe de Operações

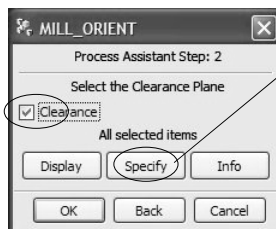


Machine and Reference Coordinate Systems

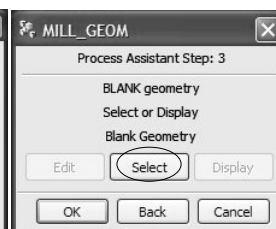
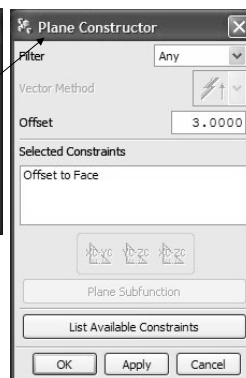
Reference C. System é coincidente com WCS

MANUFACTURING-MILL

No início é preciso caracterizar:



Plano de movimento livre de contacto

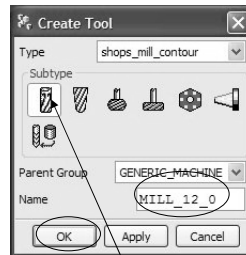


Caracterizar o bloco de antes de maquinar

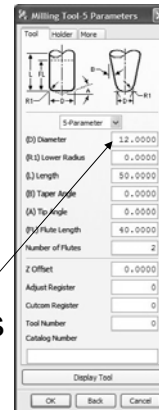
MANUFACTURING-MILL Caracterizar Ferramenta



Se não há numa
tabela é neces-
sário criá-la



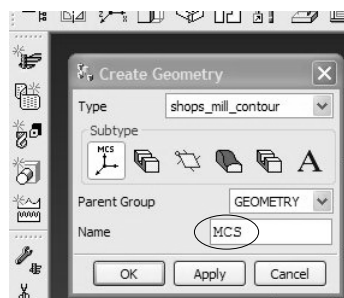
Tipo e
dimensões



Projecto Fim Curso 03-04 JOF

7 - 7

MANUFACTURING-MILL Caracterizar Geometria



- Mill Coordinate Syst.
- Mill Geometry
- Mill Boundary
- Mill Area
- Workpiece
- Mill Text

Se uma geometria for utilizada diversas
vezes, pode ser associada a um nome

Projecto Fim Curso 03-04 JOF

7 - 8

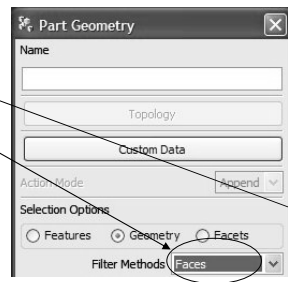
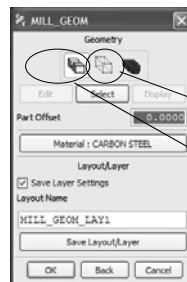
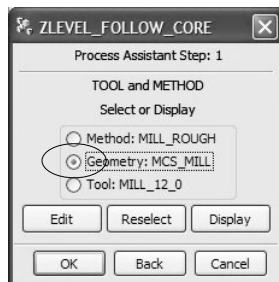
MANUFACTURING-MILL

Create Operation

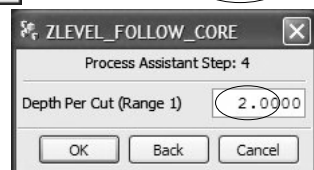


- | | |
|---|--|
| <ul style="list-style-type: none"> >Cavity_Mill >ZLevel_Follow_Cavity >ZLevel_Follow_Core >Corner_Rough >ZLevel_Profile >ZLevel_Profile_Steep | <ul style="list-style-type: none"> >Flowcut_Single >Flowcut_Multiple >Flowcut_Ref_Tool >Flowcut_Smooth >ZLevel_Profile >Profile_3D |
| <ul style="list-style-type: none"> >ZLevel_Corner >Fixed_Contour >Contour_Area_Non_Steep >Contour_Area_Dir_Steep >Contour_Surface_Area | <ul style="list-style-type: none"> >Mill_User >Mill_Control |

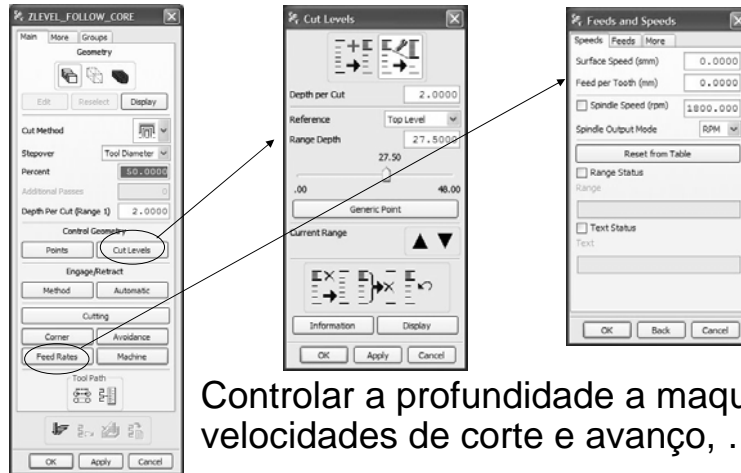
MANUFACTURING-MILL



Definir geometria a maquinar, bloco inicial e incremento de profundidade



MANUFACTURING-MILL

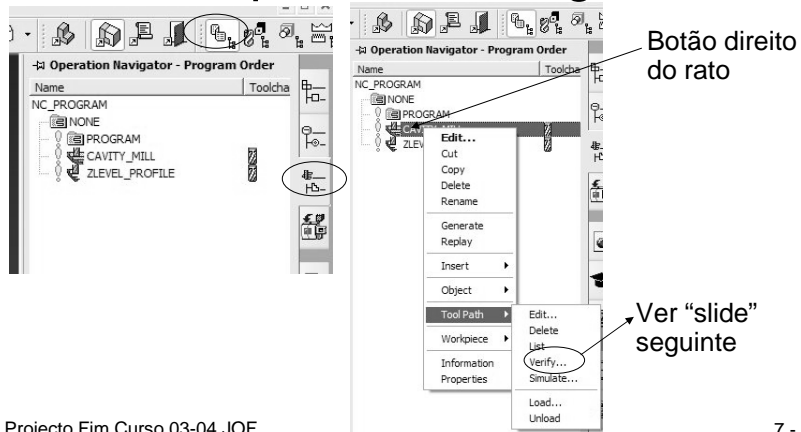


Controlar a profundidade a maquinar, velocidades de corte e avanço, ...

MANUFACTURING-MILL Generate Operation



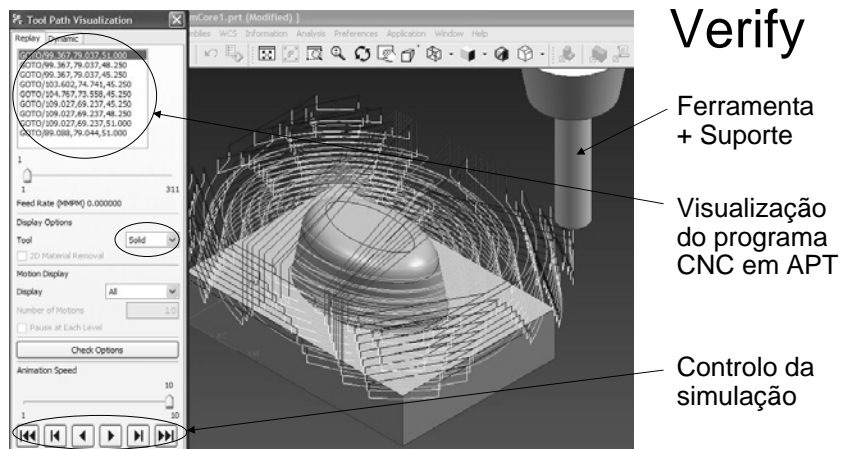
MANUFACTURING-MILL Operation Navigator



Projecto Fim Curso 03-04 JOF

7 - 13

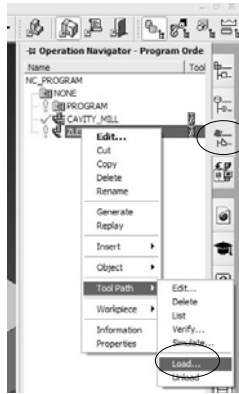
MANUFACTURING-MILL Verify



Projecto Fim Curso 03-04 JOF

7 - 14

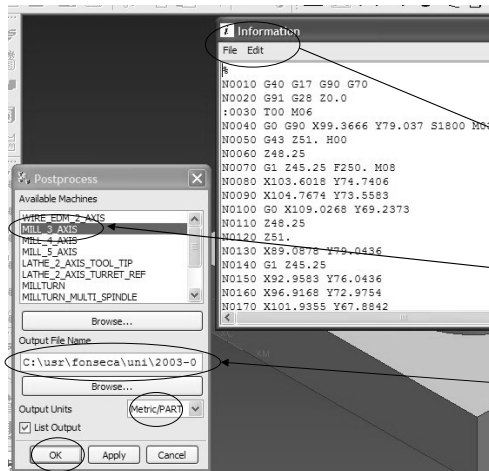
MANUFACTURING-MILL Post Processor



Projecto Fim Curso 03-04 JOF

7 - 15

MANUFACTURING-MILL Post Processor



A janela de um editor é aberta com o ficheiro obtido

Seleccionar pós-processor

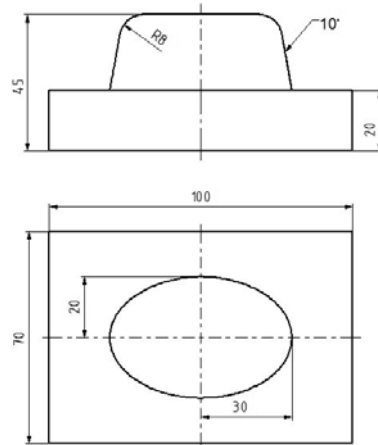
Definir o nome para o ficheiro (extensão ptt)

Projecto Fim Curso 03-04 JOF

7 - 16

MANUFACTURING-MILL

Exercício 1 Macho

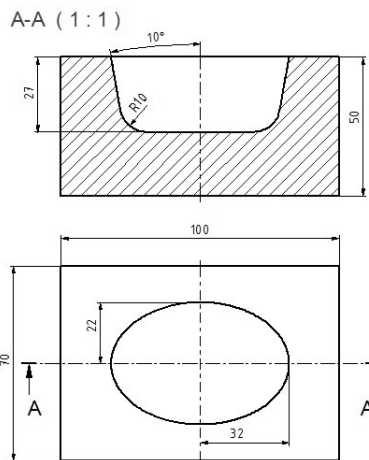


Projecto Fim Curso 03-04 JOF

7 - 17

MANUFACTURING-MILL

Exercício 2 Cavidade



Projecto Fim Curso 03-04 JOF

7 - 18