

SMART ONE™ 2400X
2400/1200/300 BPS Error Free Modem
BEST DATA PRODUCTS, INC.
CD RI OH RD SD HS TR MR

A collection of various mobile phones and PDAs, including a silver flip phone, a black flip phone, a silver flip phone, a black flip phone, a silver flip phone, a black flip phone, a silver flip phone, and a black flip phone.

A black rotary telephone with a handset, featuring a standard 12-button dial.

A small clear plastic box containing various items, including a small red box and a small black box.

A black rotary telephone with a handset and a custom dial. The dial features the letters HIK, EFG, ABD, C, LMN, 4, 3, 2, 1, 5, 6, 7, 8, 9, 0, VXY, and AEO. The letters KTAS are prominently displayed in the center of the dial.

A black rotary telephone with a custom dial. The dial features the letters DBA, EFG, HIK, C, LMN, 4, 3, 2, 1, 5, 6, 7, 8, 9, 0, VXY, and AEO. The letters 2ATX are prominently displayed in the center of the dial.

O COMPUTADOR NA DISNEYLÂNDIA

Jogos e programas
emocionantes
com & sem computador

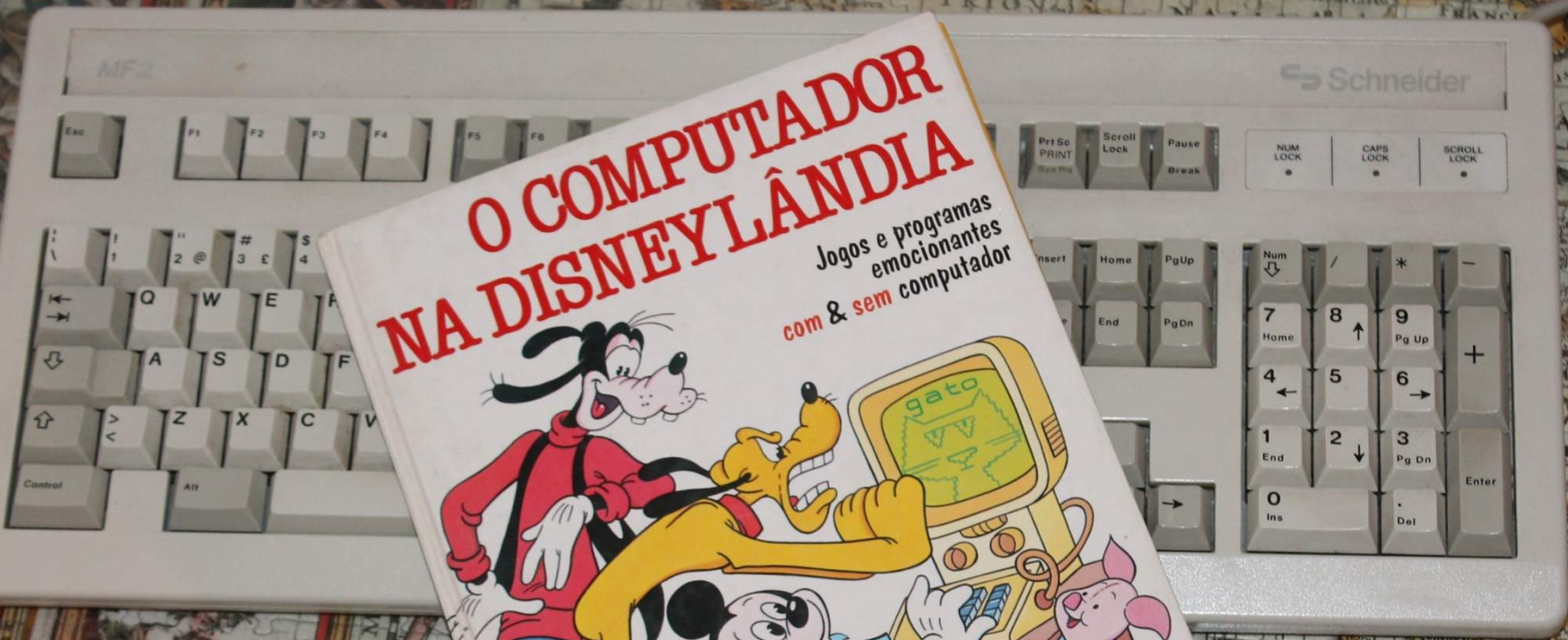


Programas adaptados ao Spectrum

verbo

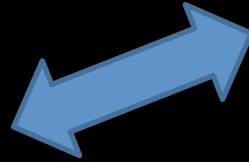
Schneider

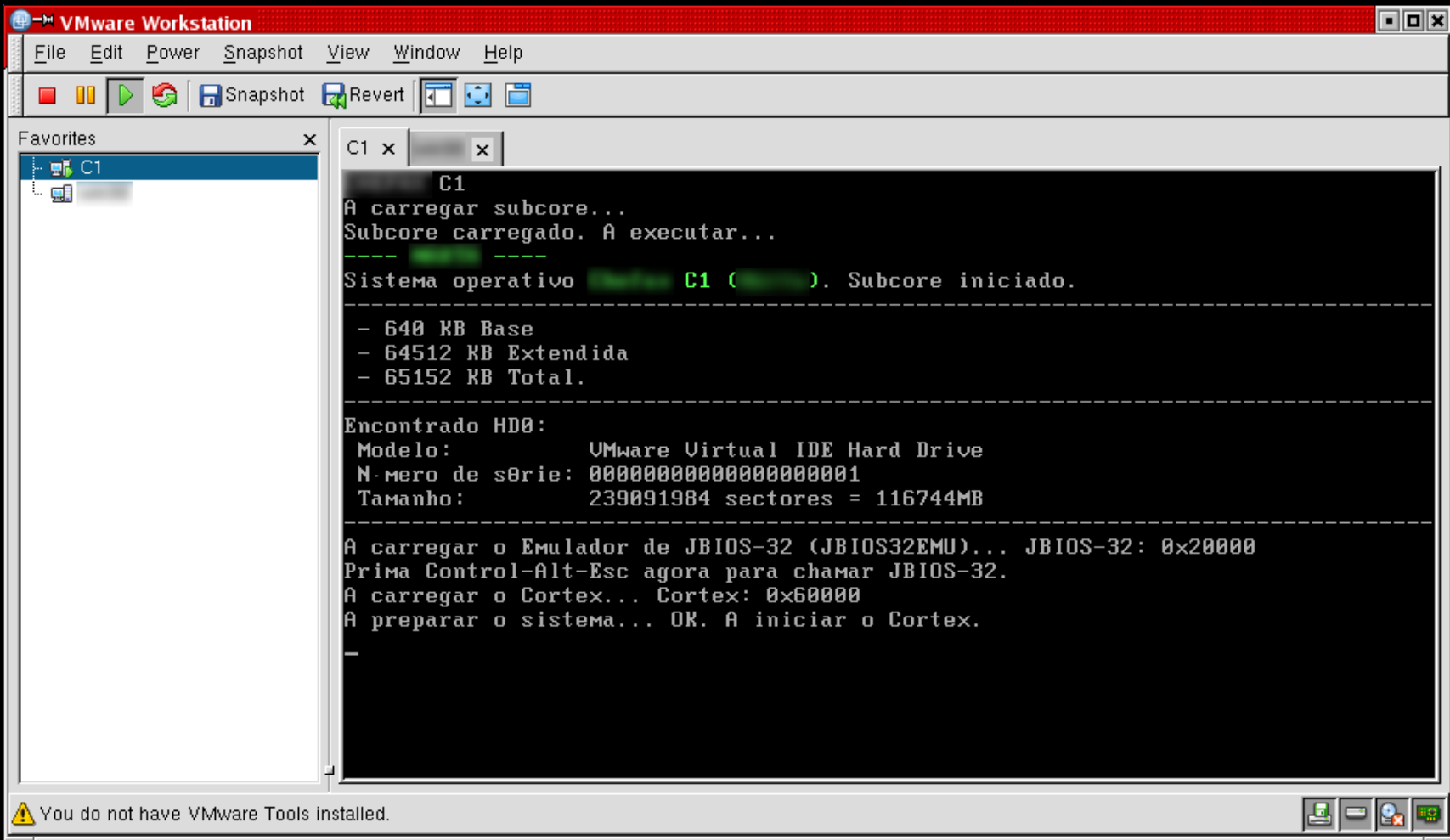
MF2















Gestor de ficheiros

	Nome	Tamanho/Dono	Data
	S10		
Conteúdo: 32 ficheiros			
Criada por Joaommp em 2005-03-31 12:17:50			
Descrição	Ficheiros do trabalho prático de Laboratório de Bases de Dados		
Relações	Nenhum directamente relacionado com esta pasta		
Bugs	Nenhum directamente relacionado com esta pasta		
<input type="checkbox"/>	casos_de_uso.dia	2619 B	2005.06.06 02:09:40
<input type="checkbox"/>	casos_de_uso.doc	20480 B	2005.06.06 02:10:19
<input type="checkbox"/>	casos_de_uso.png	59276 B	2005.06.06 02:10:49
<input type="checkbox"/>	casos_de_uso.sxw	7822 B	2005.06.06 02:12:07
<input type="checkbox"/>	casos_de_uso2.doc	26624 B	2005.06.06 02:09:24
<input type="checkbox"/>	Comentarios.dia	1310 B	2005.06.06 02:12:31
<input type="checkbox"/>	Comentarios.png	28009 B	2005.06.06 02:13:19
<input type="checkbox"/>	Editar_comentario.dia	931 B	2005.06.06 02:13:48
<input type="checkbox"/>	Editar_comentario.png	3940 B	2005.06.06 02:14:17
<input type="checkbox"/>	escola_musica2.dia	5054 B	2005.04.04 09:28:15
<input type="checkbox"/>	escola_musica2.png	88578 B	2005.04.04 09:29:11
<input type="checkbox"/>	escola_musica3.dia	4454 B	2005.06.06 02:14:44
<input type="checkbox"/>	escola_musica3.png	78345 B	2005.06.06 02:15:38
<input type="checkbox"/>	Inqueritos.dia	3923 B	2005.04.04 09:29:25
<input type="checkbox"/>	Inqueritos.png	64083 B	2005.04.04 09:30:19
<input type="checkbox"/>	Inserir_entrada.dia	989 B	2005.06.06 02:16:05
<input type="checkbox"/>	Inserir_entrada.png	4770 B	2005.06.06 02:17:04


Secções públicas

Informações do projecto
 Gestor de ficheiros
 Registo de bugs (0)







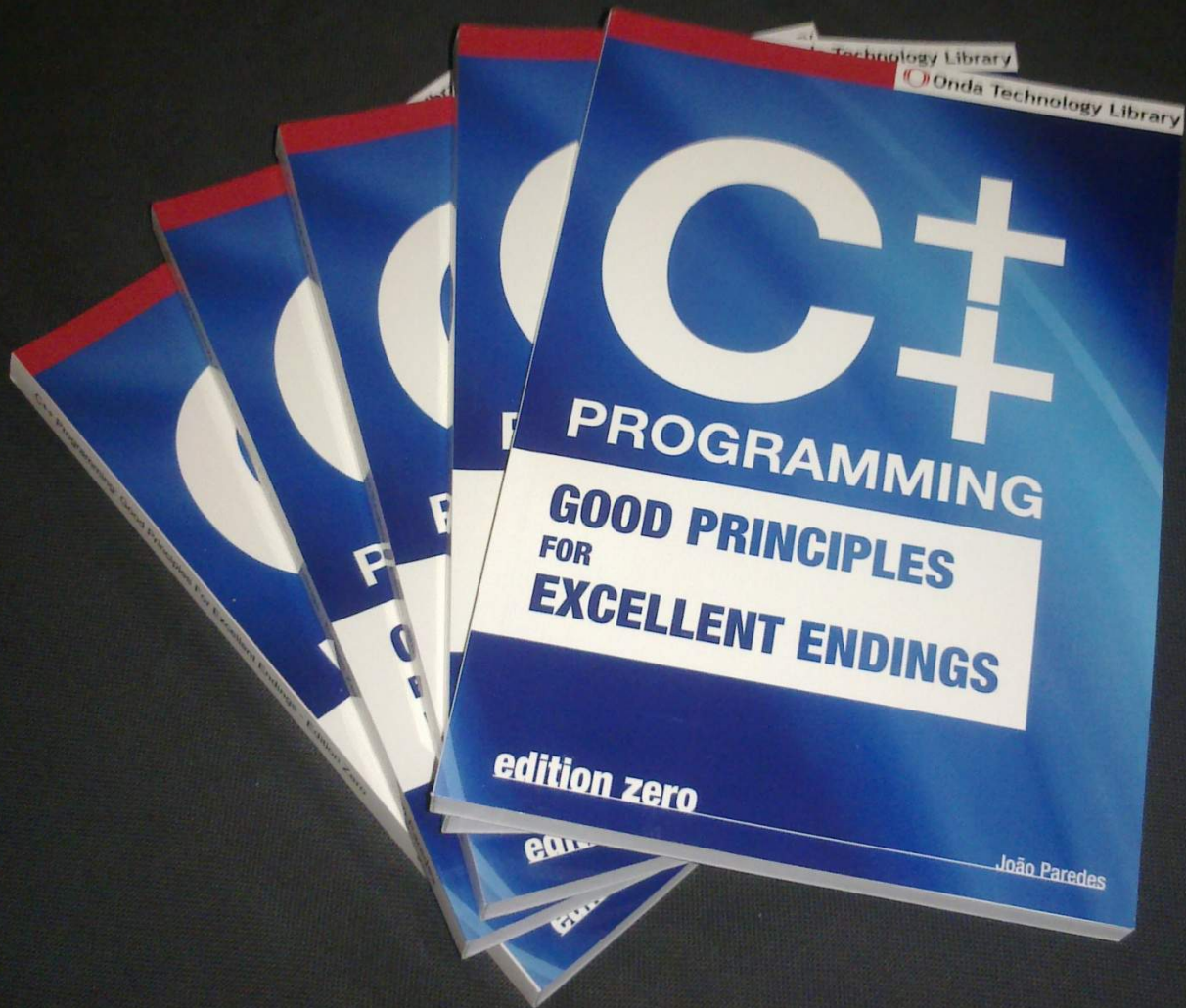
A man in a dark jacket and pants stands with his arms crossed next to a tall, multi-sectioned sign. The sign has a black top section with the Microsoft logo in white, followed by a white section with the word 'Reception', a light blue section, and a bottom section with the address 'Frydenlunds Allé 6'. The background shows trees and a grassy area.

Microsoft

Reception

Frydenlunds Allé 6





C#

PROGRAMMING

**GOOD PRINCIPLES
FOR
EXCELLENT ENDINGS**

edition zero

João Paredes

Onda Technology Library

Andrew S. Tanenbaum
Albert S. Woodhull



SISTEMAS
OPERACIONAIS

STEVENS
FENNER
RUDOFF

UNIX Network Programming

VOLUME 1
THIRD EDITION



Advanced Programming
in the UNIX Environment

Second Edition

Stevens
Rago



ROBBINS

Linux

Programming by Example



The
Fundamentals



Fusco

The Linux

Programmer's Toolbox



PLAUGER

THE STANDARD C LIBRARY

T1
PIVENTE RODRIGUES
PEDRO PEREIRA
MARCELA SOUSA
Algoritmos
de Dados
C++
PROGRAMAÇÃO EM C++
Contém CD-ROM
FCA

T1
LUIS DAMAS
SQL
Structured Query Language
Contém CD-ROM
FCA

RUBEN BARBOSA
PROGRAMAÇÃO EM C++
DOMINE A 110%
Contém CD-ROM
FCA

RUBEN BARBOSA
PROGRAMAÇÃO EM C++
DOMINE A 110%
Contém CD-ROM
FCA

Intel
Intel® 64 and IA-32 Architectures Software Developer's Manual
VOLUME 1: Base Architecture
1

Intel
Intel® 64 and IA-32 Architectures Software Developer's Manual
VOLUME 2A: Instruction Set Reference, IA-32
2A

Intel
Intel® 64 and IA-32 Architectures Software Developer's Manual
VOLUME 2B: Instruction Set Reference, IA-32
2B

Intel
Intel® 64 and IA-32 Architectures Software Developer's Manual
VOLUME 3B: System Programming Guide, Part 2
3B

Intel
Intel® 64 and IA-32 Architectures Software Developer's Manual
VOLUME 3A: System Programming Guide, Part 1
3A

Intel
Intel® 64 and IA-32 Architectures Optimization Reference Manual
1

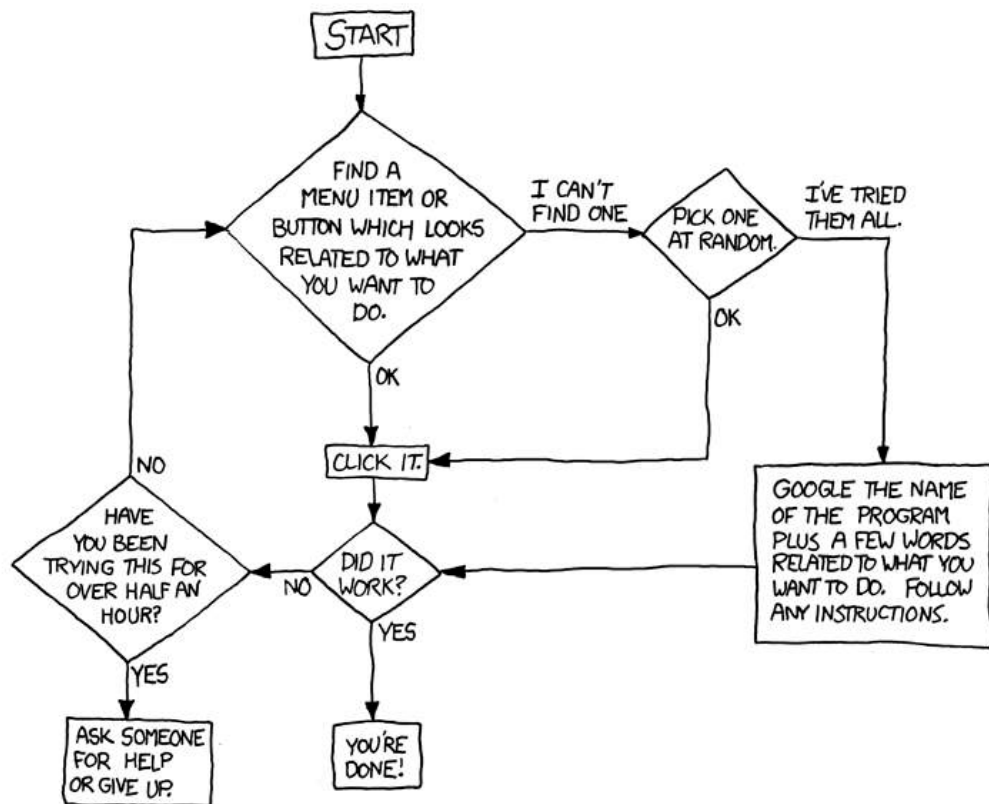






DEAR VARIOUS PARENTS, GRANDPARENTS, CO-WORKERS,
AND OTHER "NOT COMPUTER PEOPLE."

WE DON'T MAGICALLY KNOW HOW TO DO EVERYTHING IN EVERY
PROGRAM. WHEN WE HELP YOU, WE'RE USUALLY JUST DOING THIS:



PLEASE PRINT THIS FLOWCHART OUT AND TAPE IT NEAR YOUR SCREEN.
CONGRATULATIONS; YOU'RE NOW THE LOCAL COMPUTER EXPERT!