
Host Identity Protocol

FEUP

MPR

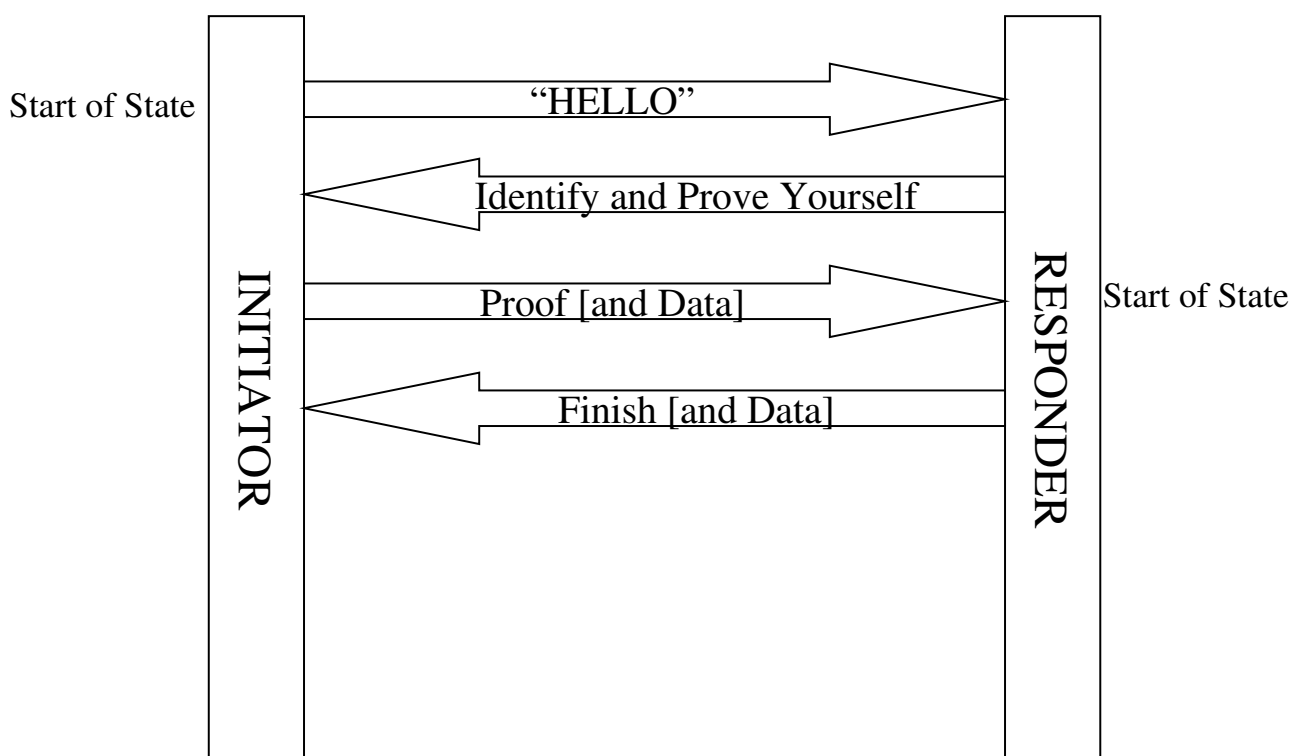
Mobility – New paradigms under study

- ◆ The problem: an IP address
 - » Names an host /interface
 - » Indicates its (network) location
- ◆ New approaches
 - » To decouple these concepts
 - » Introduction of new /modification layers
- ◆ For instance
 - » IP indicates (network) location useful for routing, deliver packets
 - » New layer about the host identity
- ◆ In this approach, hostX
 - » May be move between networks
- ◆ Relationship to track during mobility
 - » Not homeAddress care of address
 - » But, Host Identity current IP address
- ◆ Security, multi-homing

Host Identity Protocol

- ◆ <http://www.ietf.org/html.charters/hip-charter.html>
- ◆ public cryptographic keys used as host identifiers
 - » Host Identifier (HI)
 - The HI is a public key and directly represents the Identity
 - » Host Identity Tag (HIT)
 - Its operational representation 128 bits long and is used in

HIP - Protocol



HIP – Message Format

